

COBY
MAJE
& STEVE HARTL
MAY 2018
3:24 PM

GRAND OPENING OF THE TRAILS

AN AVIATION ACREAGE COMMUNITY ON THE BANKS OF THE SUWANNEE RIVER
FEB. 28 - MAR. 1 — SATURDAY & SUNDAY — 10 a.m. - 5 p.m.

DRIVE OR FLY IN!

Features:

- 3500' Turf Airstrip
- 6 Taxi-ways off Airstrip
- 20 acres of common areas for recreation. Ideal for horseback riding and hiking.
- 12 Four acre Non-Airstrip Lots:
\$8995 each \$495 down \$89 per month
- 17 Four acre Airstrip Lots:
\$9995 each \$995 down \$95 per month
- 13 One acre Riverfront Lots:
\$12,495 each \$995 down \$125 per month

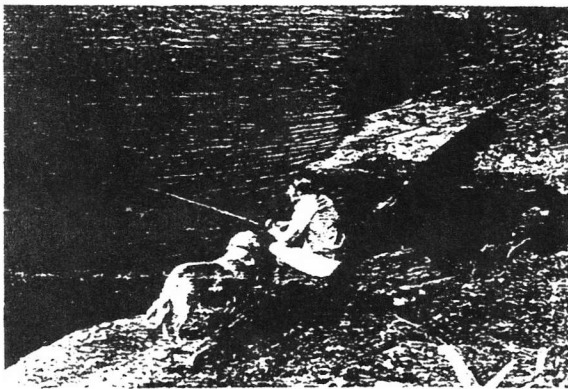
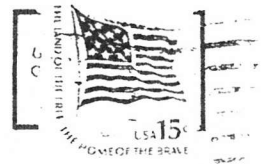
We are now showing this unique community! Call us toll free today for more information or appointment.

1-800-342-8600



Lic. Real Estate Broker
412 Northeast 16th Avenue
Gainesville, FL 32601
Call Toll Free 1-800-342-8600
ADDRESS CORRECTION REQUESTED

First Class Mail



M. B. & Wm. Squires
Airport Managers
Rt. 1, Box 1391
Cocoa, FL 32922

You can own a home at The Trails financed at 9¾%, 30 years, thru a special building program available to qualified buyers in this area. Ask us about the best building program in Florida.



DIRECTIONS BY AIR & BY ROAD TO THE TRAILS

1. BY AIR

a. During Grand Opening — Feb. 28 - Mar. 1 — Sat. & Sun. — 10 a.m. - 5 p.m.:

Fly to The Trails but do not land — due to recent completion of airstrip, circle the airstrip once — Then land at Suwannee Belle Airport nearby

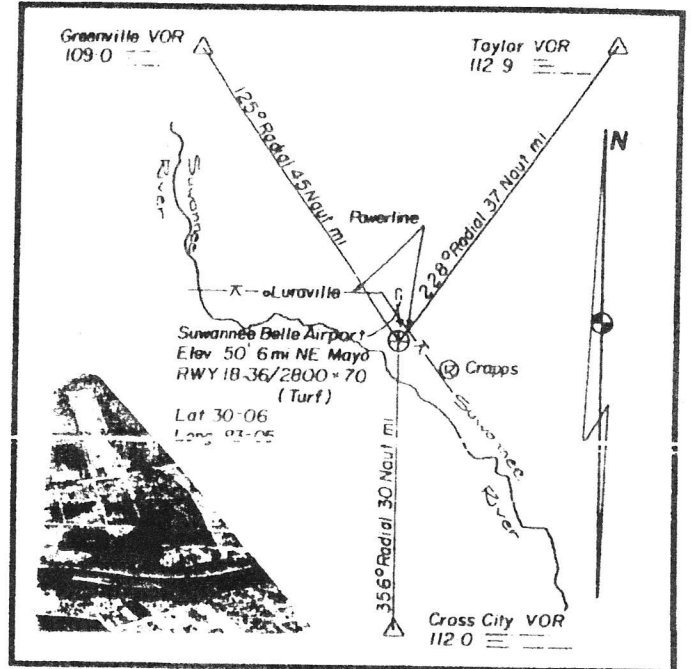
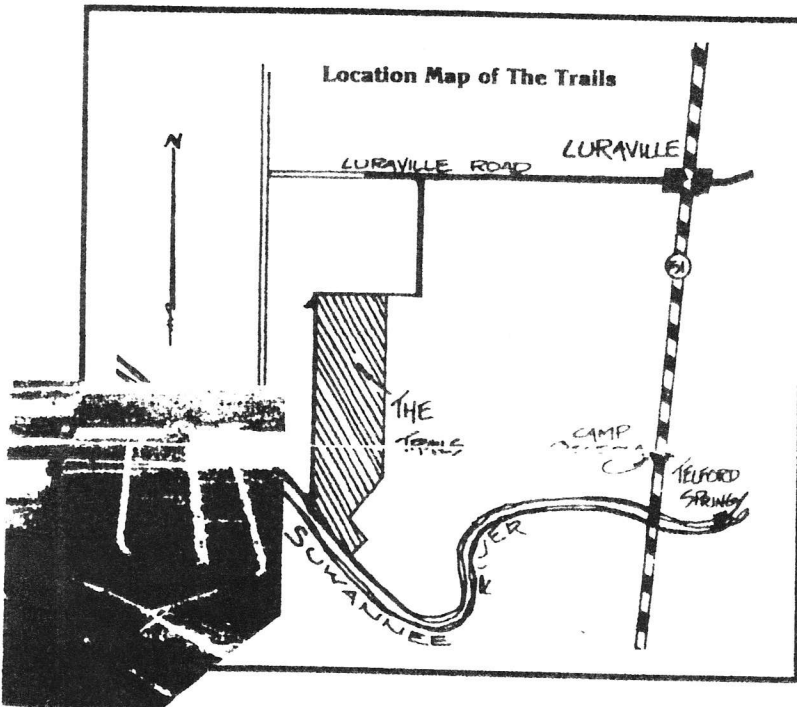
A Florida Woodland representative will meet you within 10 minutes to show you The Trails.

b. Other Times

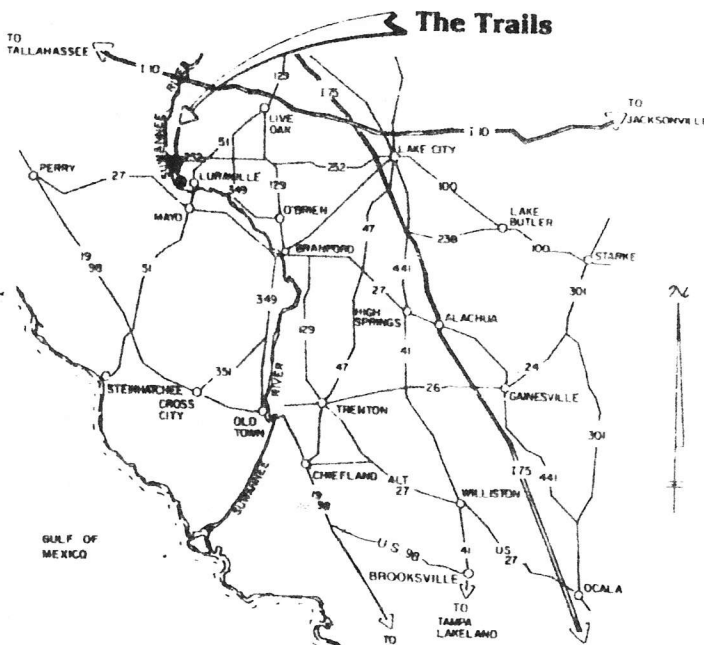
Please call 1 or 2 days ahead of visit (1-800-342-8600) and make appointment —

Fly to Live Oak and land at the Live Oak/Suwannee County Airport (3000' paved airstrip)

A representative from the Live Oak office (620 S. Ohio Ave., 904/362-1776) will meet you and show you The Trails.



Suwannee Belle Airport is a 3000' x 400' Turf Airstrip, located in the Jacksonville Sectional just north of the Suwannee River.



2. BY ROAD

a. During Grand Opening —

Feb. 28 - Mar. 1 — Sat. & Sun.

10 a.m. - 5 p.m.:

Representatives will be on site — just drive in.

b. Other Times

Please call 1 or 2 days ahead of visit (1-800-342-8600) and make appointment.

Take I-75 to Alachua/High Springs — US 441 Exit (approx. 13 miles north of Gainesville). Go approx. 4.6 miles west on 441 to US 27 (careful or you may miss this turn veering left). Continue west on US 27 to Branford. Continue west to Mayo. Turn right (north) onto Hwy 51 in Mayo. Cross the Suwannee River, and continue 1½ miles to the Luraville Store for the